

ViewSheet

ViewSheet allows to obtain a fast preview of the present sheets in a created drawing with one of the Products Electro Graphics CAD.

ViewSheet can be start after to opening a drawing file in graphical interface of one of programs CAD of Electro Graphics.

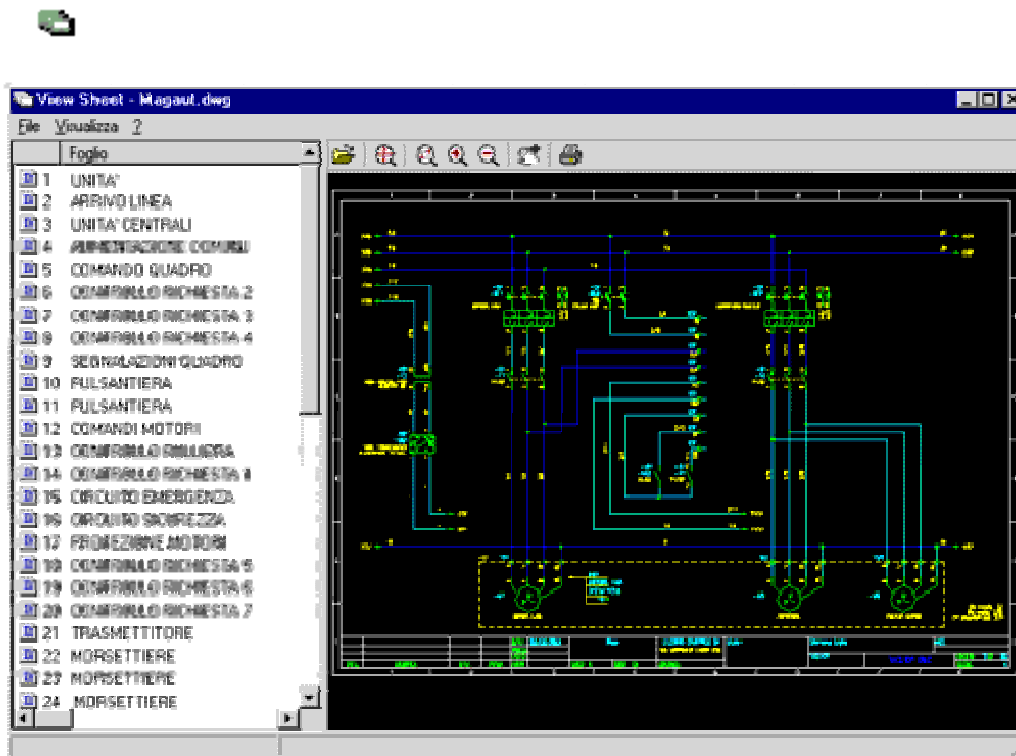
Starting ViewSheet from graphical interface

From the menu of the Sheets, select View sheets list . ViewSheet start and load the current diagram.

ViewSheet can be start also like independent program, without to start graphical interface CAD.

Starting ViewSheet independent

From the menu Start of Windows, choose Programs, therefore from the group of Electro Graphics programs to select Instruments and ViewSheet from the menu.



Note. The visualisation of the sheets and the relative information refers to the last saving of drawing.

The left box list the sheets in drawing. Selecting Columns set up, from the View menu appears a dialog with the list of the information available of drawing current.

In ViewSheet it is, moreover, possible:

- to open a any drawing file .dwg;
- to print of the selected sheets;
- to execute Pan Zoom and like in graphical interface CAD.



The window Property

The command Property of the menu View open the dialog window Property in which it is possible to set up any options about the visualisation of the characters and the colour of the background of drawings.

ViewSheet not view hatch.

In the Characters card it is possible to set up the visualisation characters.

The use of True Type characters can slow down the process of generation of drawing.

After modifications about characters, for a correct visualisation of drawing it is necessary to reopen it.

In the Colours card it is possible to select from the list the colour of the background in which they come visualised the sheets.

Print

The File>Print command opens the Print dialog.



Print on file: it sets up the press on file; pressing Press it will come asked the name for the file.

Print selected sheets: it is active if more sheets in the list are selected or and indicate that only such sheets come prints.

Print to colours: it determines if the press must be carried out to colours or in black and white.

To press the Setup button in order to choose printing to use, the dimension of the paper, the printing feeding of and the guideline of the sheet.

The acknowledgement of driver pdf of Electro Graphics is previewed, in order to print the elaborated ones in format pdf, readable with Acrobat Reader®.

In order to print click the Print button.

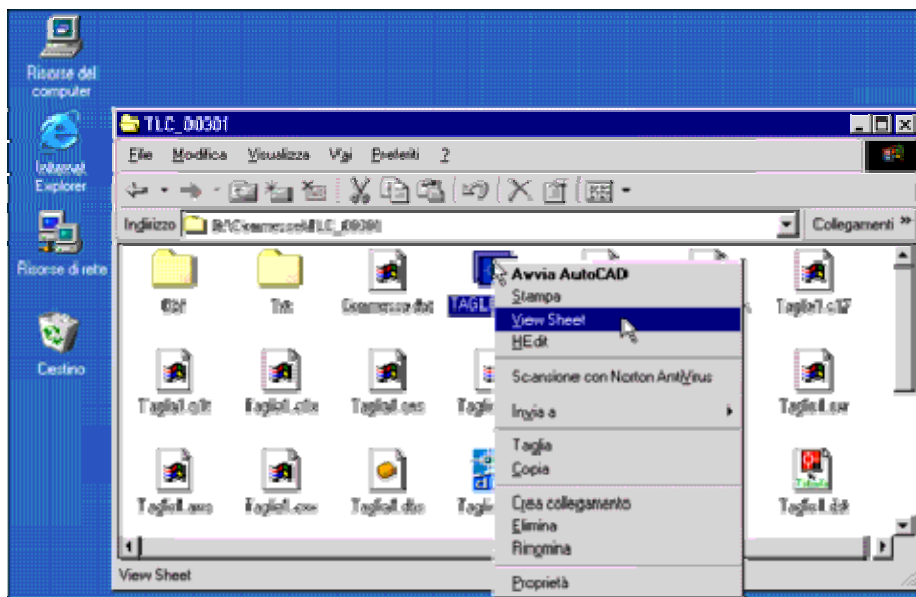
Execution of ViewSheet from Windows File manager

ViewSheet can be under way also from Windows File manager.

It is therefore possible to preview the content of the drawing selected without open it with graphical interface CAD.

Starting ViewSheet from Management it revives of Windows

1. Start Windows File manager, set the cursor inside of the containing directory the drawing file.
2. Select the file and to press the right button of the mouse.
3. From the pop-up menu, select ViewSheet.



To execute the command ViewSheet from Windows File manager, previously it must be started ViewSheet at least once from the graphical interface of programs CAD of Electro Graphics or from Start>Programs>Electro Graphics>Series 2008>Tools.

Free distribution

ViewSheet is a free software and can be distributed to who needs to visualise the drawing files created by the Electro Graphics products.

Installing ViewSheet in a PC

1. Start Viewsheets.exe from the folder UTILITY \ VIEWSHEET of the disc Electro Graphics Products Series 2008.

Note. It is possible to download ViewSheet also from the web site of Electro Graphics http://www.electrographics.it/eng/download_3.htm.