

## Generality

Job order management, network projects sharing, backup and recovery.  
Saving the project to EG Cloud and sharing documentation.  
Management of user profiles for conditional access to the common database and library.  
Management of interface styles (dark theme) and HDPI screens.

## Terminal boards

Managing plug-in bridges system on multiple levels.  
Managing accessories (separators, endings, etc.).  
Editing and ordering terminals and automatic diagram update.  
Undo / redo in editing the data of terminal blocks, cables, connections and labels.  
Consistency check between terminal section and connected wire section.  
Function for the automatic completion of a terminal block to which a cable is connected.

## Automatic panel routing

Automatic processing the wires route inside the panel, according to the component shapes and cable conduits designed in CAD (requires CAdelet or iDEA).  
Connection between distinct panels or between panels and boards.  
Processing the optimized sequence of wiring of panel, according to the best route.  
Check of the saturation of the conduits inside panel and labeling.  
Exporting cabling data and calculated lengths to a generic spreadsheet in order to interface directly with wire cutting-stripping-crimping machines.  
Direct interfacing to Makfil System and CAD Cabel.

## Wiring list and table

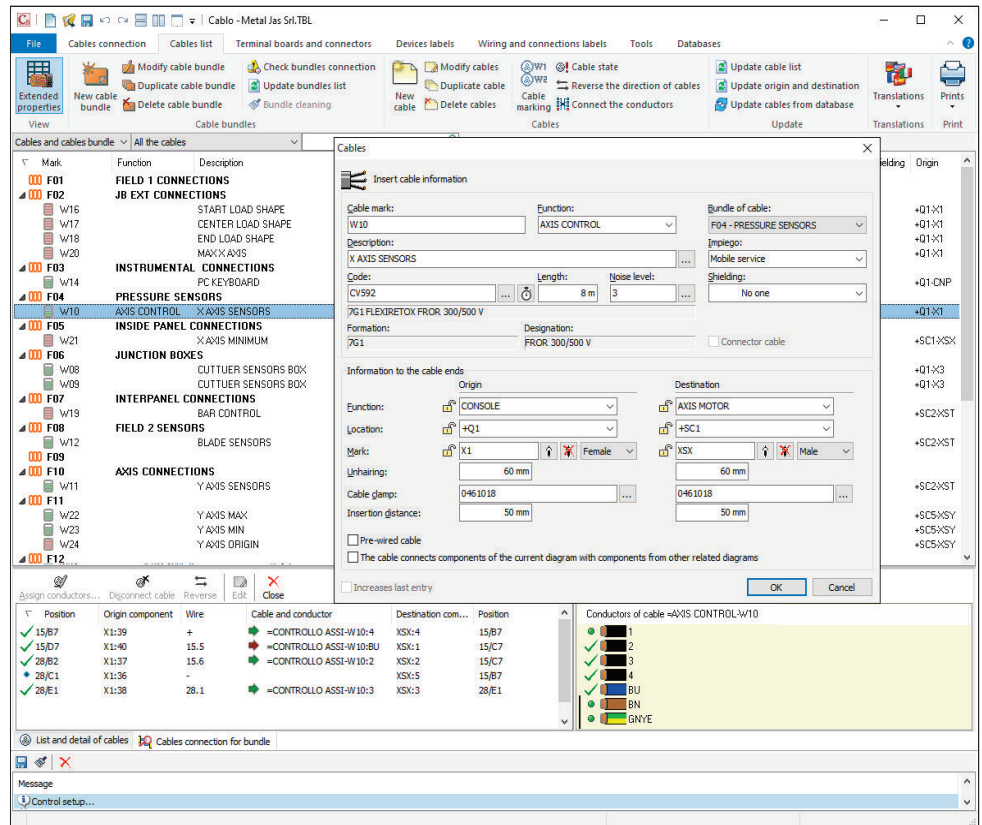
Managing wiring list, identifying each wire of connection between the terminals of the various equipment in the diagram.  
Assigning information about designation, colour and section of the wires.  
Assigning wire and terminal labels to component labels.  
Automatic assignment of the sequence of connection to each wire of the diagram, wire length and type of the terminal, in order to obtain the connection table.  
Wiring table, to true identification of serial and parallel connections where provided for, to wire without error, ensuring the reproduction of the prototype of connection diagram.  
Managing cable lugs, with customizable categories.

## Labels database

Definition of labels type for wire and equipment: this data will be used during the markers generation by the specialized software compatible.  
Possibility of customize the database by the user.

## Wires and equipments exportation

Data file exporting for interfacing directly with



the leading software for printing wire labels or equipments plates.  
Setup of exported information: wire, sequence, mark, upstream and downstream element, according to CEI 16-1 and CEI EN 62491 standard about identification of connections.  
Data file exported format: Grafoplast (Simple98, Simple2000 e SI2000), Modernotecnica, Weidmuller (M-Print), Brady, Cembre (Doctor Plot, Genius and GeniusPro), Cabur (Marking Pro), Phoenix Contact (Clip Project), Morsetitalia (Script@mi), KMI and .xls.  
Interfacing with Autodesk Inventor for exporting the list of links.

## Cables database

Database with more than 12,000 cables complete of technical data (formation, typology, sections, weights, bending rays and identification of conductors with numbers or colours).  
User can customize the database.

## Cables bundle

Defining and managing cables bundles.  
Correlation of bundles with the interconnection diagram in CAD.  
Check of consistency between interconnection diagram and wiring diagram.

## Connecting cables

Generating cables list with assignment of mark, function, reference terminal board, noise level, shielding type and length (linked to the cables database).  
Automatic acquisition of cable list from topological definition or from previous projects.

Connecting cables to a support terminal block or directly to components, by direct selection or by pointing to elements on the drawing.  
Marking of connections to match the cable and simultaneous checking of cable saturation (used wires in the cable) and other incoherencies within the connection.  
Detailed representation of cables with connectors or connected to terminal blocks.

## Bill of cables

Summary table of cables which highlights the different types of cable used in the project and the length of cable used for each type.

## Printouts and exporting

Preview and printout of cable laying table, cable list, bill of cables, terminal list, cabling list and wiring table.  
Any report can be exported as an ASCII file, XLS, CSV, HTML, RTF, or WMF.  
Any report can be saved as PDF and add to existing PDF document in order to obtain a single PDF summary of project documentation (drawings, diagrams, reports,...).  
Unicode UTF-8 translation in different language of all text in the work.  
Drawing of cables laying table and terminals table in CAdelet and iDEA.

## Integrations

CAdelet Schemi, iDEA: wiring diagrams for industrial automation.  
CAdelet Professional: electrical system and wiring diagrams engineering.

**System requirements:** Computer with 3 GHz or higher processor.  
At least 8 GB RAM. Hard disk with at least 6 GB free space. 1024x768 screen resolution.  
USB port, mouse, printer or plotter.  
64-bit O.S. Windows 10 or 11.